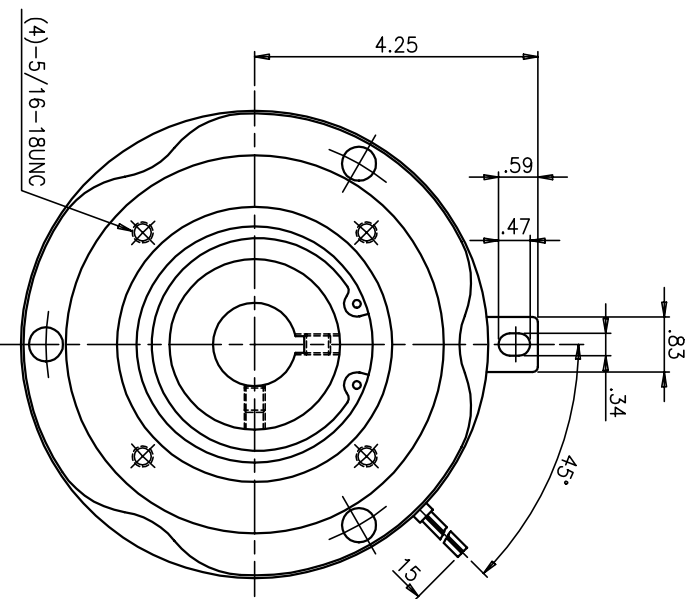
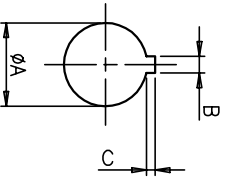


BORE & KEYWAY

$\phi A_{+0.001}$	B	C	D
$\phi 1.125$	1/4	1/8	3.00
$\phi 1.250$	1/4	1/8	3.00
$\phi 1.375$	5/16	5/32	4.61
$\phi 1.500$	3/8	3/16	4.61

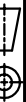


STATIC TORQUE : 1000 LB.-IN.
 RATED VOLTAGE : D.C. 24V, 95V
 POWER : 42 WATTS (20°C)

REV.	DESCRIPTION	DATE	FINISH	DRAWN	CHECKED	SCALE	UNITS	INCH	TITLE	MATERIAL
						1=2			SHAFT MOUNTED CLUTCH MODEL : SC-700-00	
										DWG NO. 1591



NEW TORQUE, INC.
 1-800-966-8325



FINISH

DRAWN

12-26-96

TITLE

MATERIAL